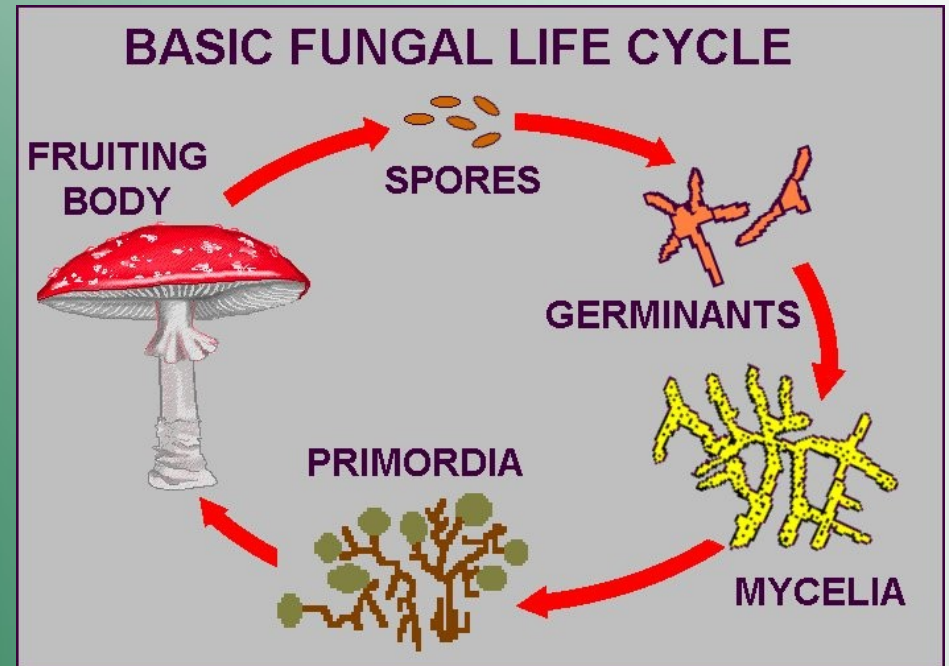


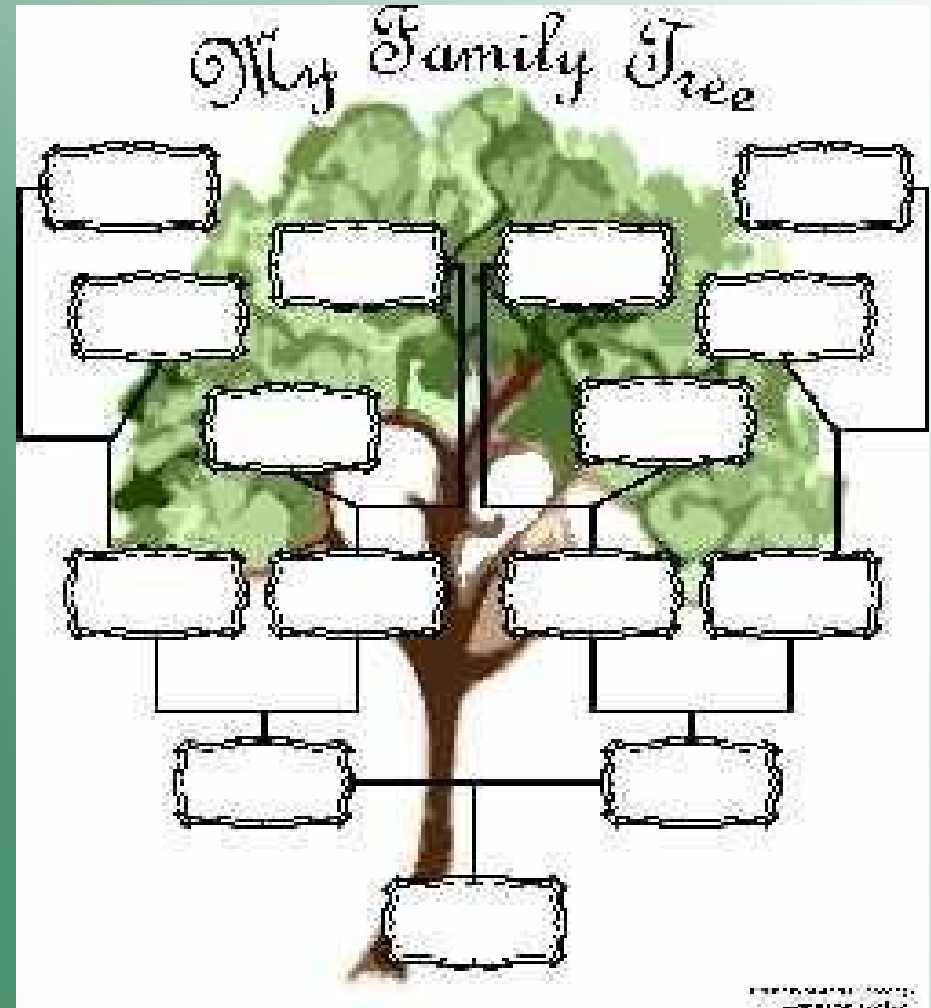
FUNGI

- By: Samantha Moreno & Jacob Manuel.



The Problem

- The problem is they are trying to make a family tree of the *Alternaria* fungi



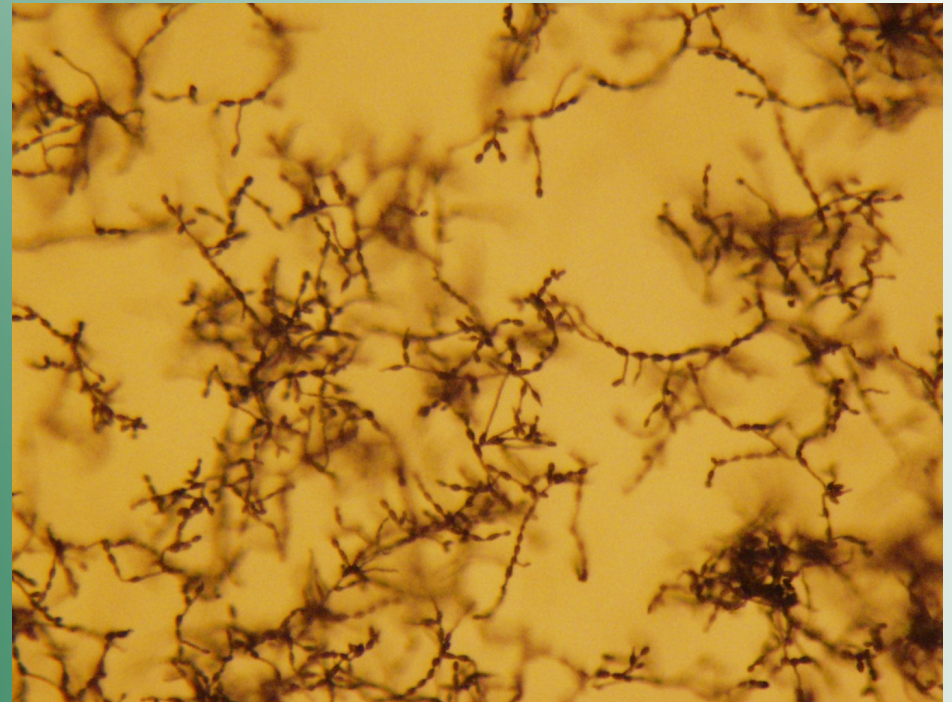
Why is it important?

- It is important because if the fungi are closely related, then they probably share the same characteristics
- If knowing two fungi are closely related and there is a chemical that can kill one it can possibly kill the other

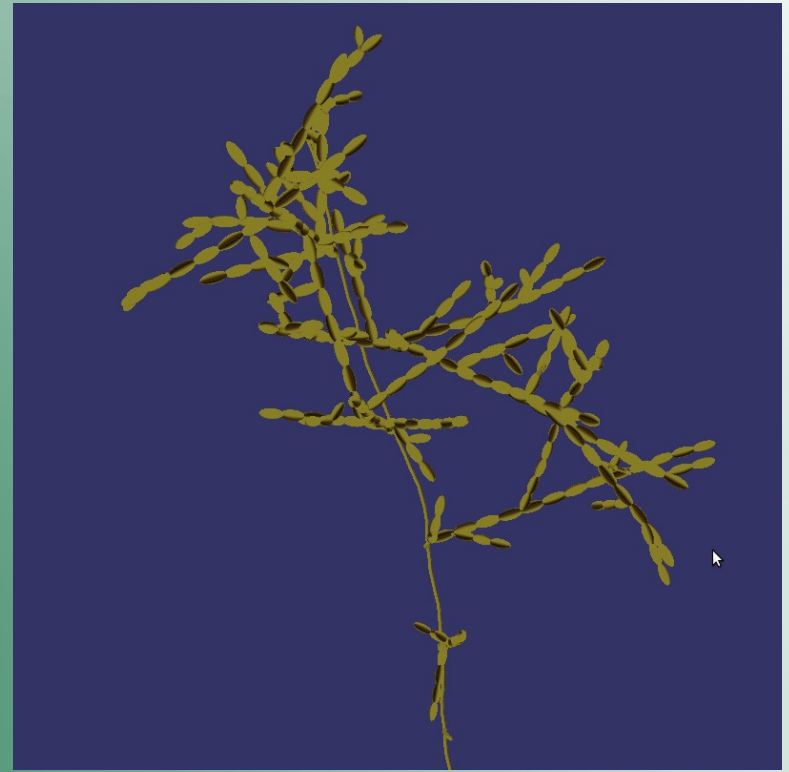
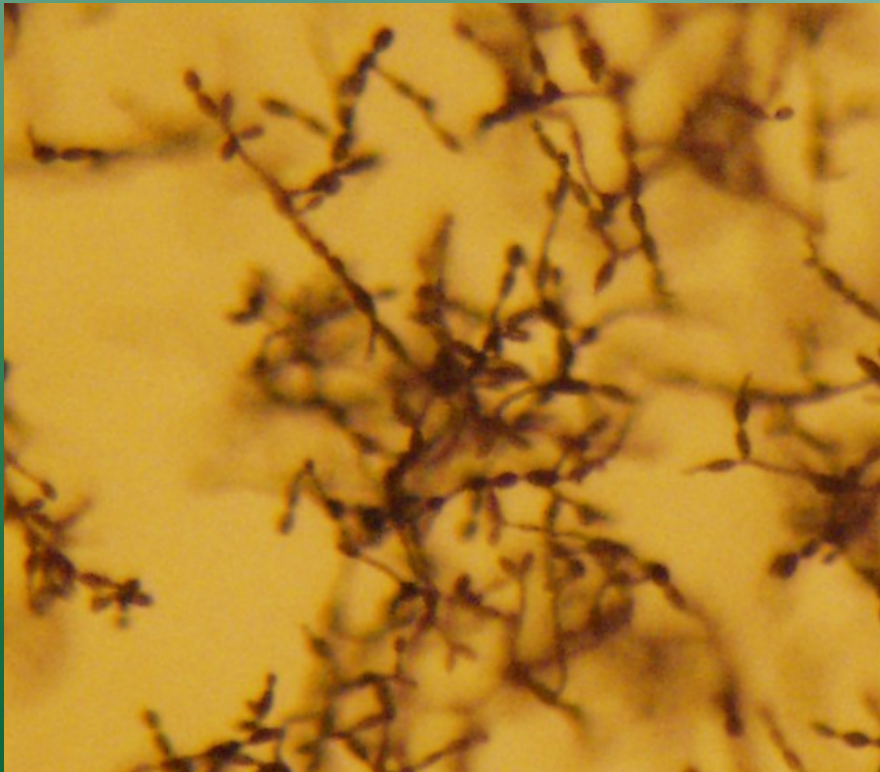


How can computer scientists help?

- Computer scientists can help by programming computers to identify the similarity of spores in the fungi
- Programs identify the likeness in spores by the amount and the length



Data/Model



This is the actual fungi and this is the 3-D model we made

Thank You!

- I.S.C.
- Counselors
- Mrs. Lina
- Mr. Davidson
- Dr. Berry Pryor, Joe & Francesca from the fungi labs
- And all the labs we visited